

51BM0.25/SIP-EJ444-E3-X2

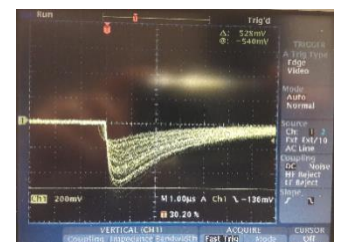
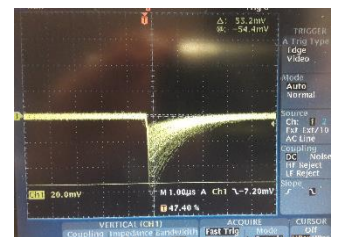
Description: Thin model **Alpha/Beta** SiPM Scintillation detector with built in temperature compensated bias generator and preamplifier

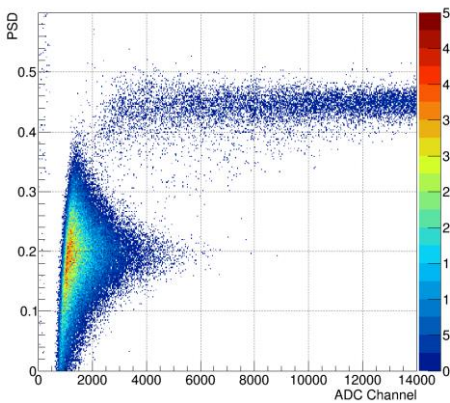
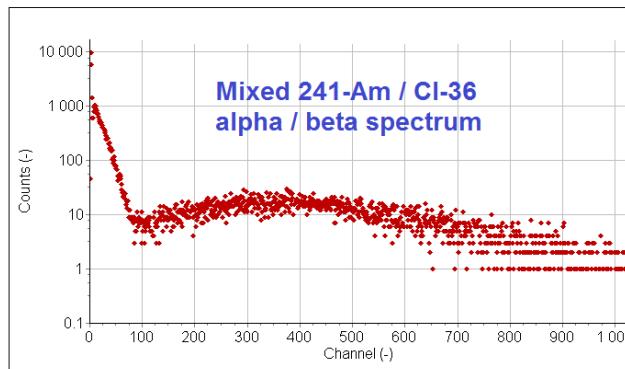
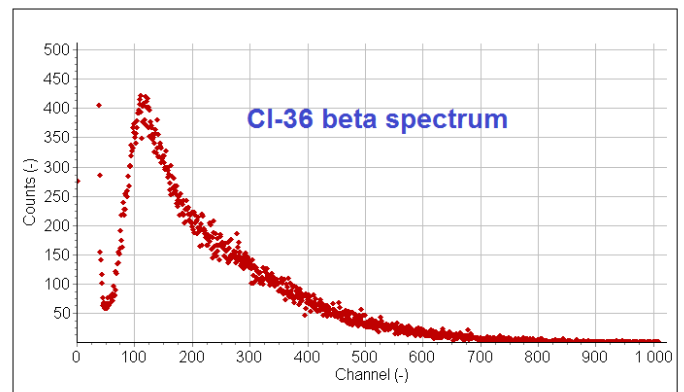
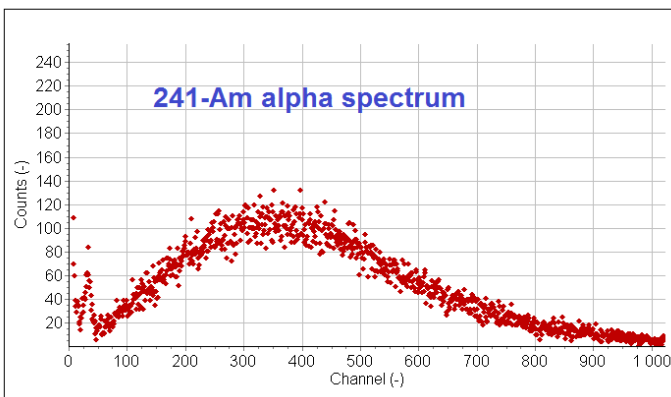
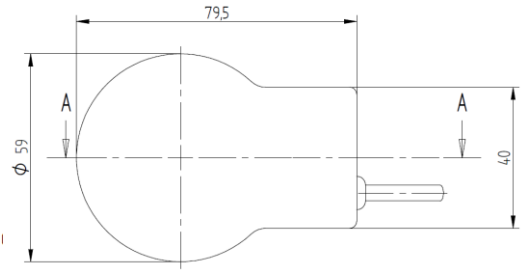
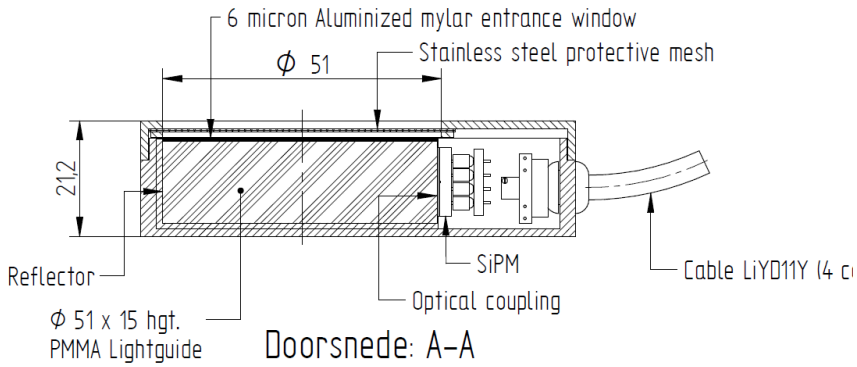
- Scintillation material** : ZnS(Ag)+plastic scintillator
 $\varnothing 51 \times 0.25\text{mm}$ (EJ-444)
- Drawing number** : V-1611
- Crystal read out** : SiPm, Array J-60035-4P
- Housing** : black light tight polyester
- Entrance window** : light-tight double aluminized mylar 0.9 mg/cm^2
- Protection** : 72 % transmission stainless steel grid
- Power supply** : + 5 – 16 V (3 mA)
- Electrical connections** : LEMO connector ERA0S302CLL Flying leads
 Pin 1 = +5 – 16 V (brown)
 Pin 2 = Signal (white)
- Cable** : 50 cm 4 core shielded LIYD11Y



Performance

- Pulse rise time (0-100%)** : 150 ns (betas)
 530 ns (alphas)
- Pulse fall time (1/e)** : 1.2 μs (betas)
 530 ns (alphas)
- Gain** : Approx. 75 mV/MeV (betas)
 Approx. 500mV /5.48 MeV (alphas)
- Noise level** : < 50 keV (betas) @ 22 degrees C





2D PSD scatterplots of detector under mixed alpha/beta irradiation

Last revision: 08-02-2019
 Revision number: 0
 Document : 51BM0.25_SIP-EJ444-E3-X2

Scionix Holland B.V.
 P.O. Box 143
 3980 CC Bunnik
 The Netherlands

Tel: + 31 30 657 03 12
 Fax: +31 30 656 75 63
 Website: www.scionix.nl
 E-mail: sales@scionix.nl