

SCIONIX HOLLAND BV
Dedicated Scintillation Detectors

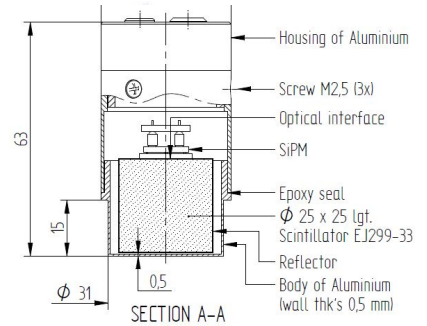
P.O. Box 143
 3980 CC Bunnik
 The Netherlands
 Tel. 31 (0)30 657 0312
 Fax. 31 (0)30 656 7563
 E-mail : SCIONIX@scionix.nl
 Web. <http://www.scionix.nl>



Dedicated
 Scintillation detectors

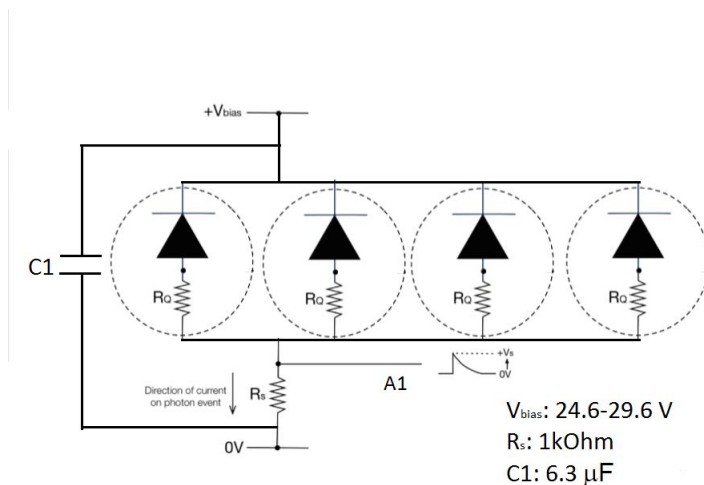
Subject: 25B25/SIP-EJ299-33-ES-X

Description: EJ299-33 Scintillation detector
 read out by 12x12 mm² SiPM



- Scintillation material** : EJ-299
- Drawing number** : VS-1391-40
- Crystal read out** : 12x12 mm² SiPM
- Bias range** : 25-30 V. Do not exceed 30.5 V!
- Test bias voltage** : 28.5 V
- Electrical connections** : LEMO ERA.0S.250.CTL (Bias)
 LEMO ERA.00.250.CTL (Signal)
 Grounding provided via mass of connector
- Load resistance** : 1 kΩ

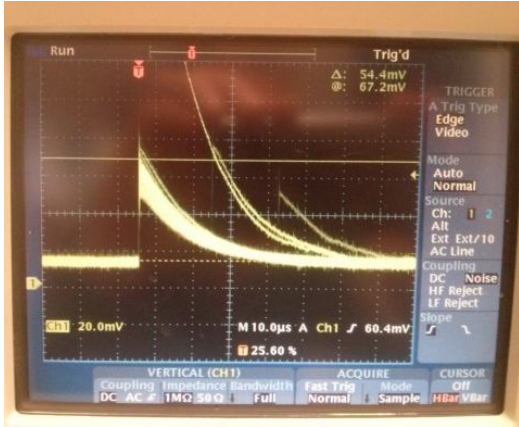
All cathodes and anodes of the 4 segments the ArrayC-60035-4P are internally connected and the same bias is applied to them.



Signal details

Pulse fall time : 10 μs (1 k Ω)
816 ns (50 Ω)

Pulse rise time : ~20 ns (0-100%) (1 k Ω and 50 Ω)



Gain : 100 mV / MeV (1 k Ω)

Temperature coefficient : -1 to -1.5 % per degree

Last revision, May 19, 2016
25B25_SIP-EJ299-33-ES-X

